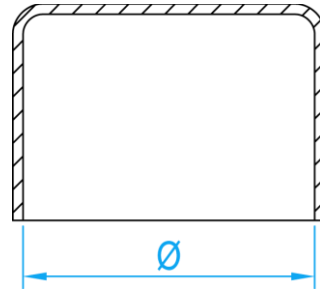


# COPPER CAPILLARY FITTINGS END CAP

COMPLY WITH BSEN1254-1:1998



CROSS SECTIONAL VIEW

## COMPONENT PARTS

| PARTS   | MATERIAL |
|---------|----------|
| END CAP | COPPER   |

## DIMENSIONS

| SKU      | DN<br>Ø (mm) | WEIGHT<br>(Kg) | PCS/CTN |
|----------|--------------|----------------|---------|
| MBLEC015 | 15           | 0.005          | 3300    |
| MBLEC020 | 22           | 0.015          | 1300    |
| MBLEC025 | 28           | 0.020          | 720     |
| MBLEC035 | 35           | 0.039          | 400     |
| MBLEC042 | 42           | 0.053          | 250     |
| MBLEC050 | 54           | 0.100          | 120     |
| MBLEC065 | 67           | 0.147          | 50      |
| MBLEC080 | 76           | 0.204          | 50      |
| MBLEC100 | 108          | 0.538          | 24      |
| MBLEC150 | 159          | 0.850          | 4       |